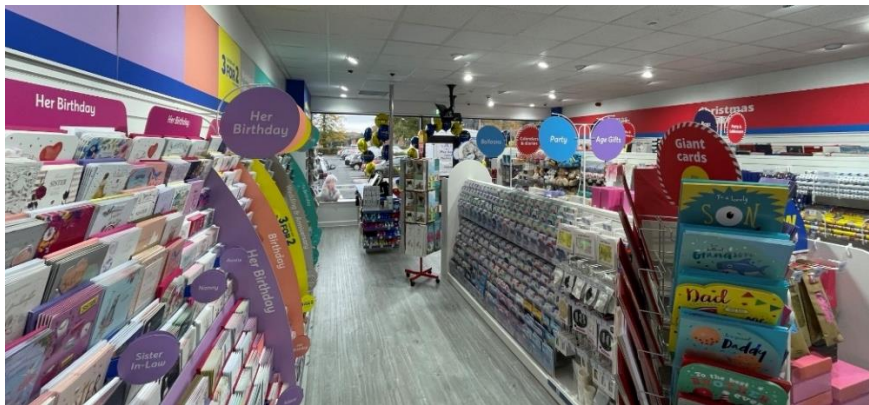
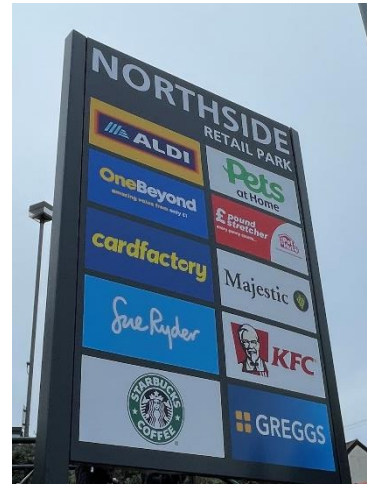


1 November 2024

Leeds, Meanwood, Northside Retail Park, Unit 2A.



Card Factory have opened a new store in the former Barnardo's unit of about 1,050 sq ft.

Three fascias have opened in the last 4 weeks at the end of 10 months of building works, including roof-repairs and car park resurfacing. The right-hand side of the terrace has been transformed.

Starbucks took the new 2,220 sq ft unit created by the extension of Aldi and started trading on 4 October.

Aldi re-opened the day before Card Factory in their larger store of about 19,250 sq ft.

One Beyond opened in February 2023.

Gregory Moore Property, and Linda Davies of LJD Consultancy acted for the landlords CBRE Investment Management. Card Factory were advised by Morgan Williams.



March 2022



October 2024

